

in several genera of Compositae [*Madia*, *Layia* (Clausen, 1951), *Microseris* (Chambers, 1955), and *Helianthus* (Heiser et al., 1962)], in the genus *Gilia* (Polemoniaceae) (Grant, 1954), and in *Clarkia* (Onagraceae) (Lewis & Lewis, 1955).

In the Cruciferae we find the pattern exemplified by *Brassica* (Yarnell, 1956), in the Scrophulariaceae by *Collinsia* (Garber, 1960), in the Solanaceae by several annual sections of *Nicotiana* (Goodspeed, 1954), and in the Gramineae it is displayed inter alia by *Bromus* sect. *Ceratochloa* (Hall, 1955).

#### LITERATURE CITED

- BELLIARD, J. & J. BESSE. 1980. Etude du rôle des feuilles dans un phénomène d'incompatibilité entre deux taxons de *Phyllanthus odontadenius* Muell. Arg. Bull. Soc. Bot. France, 127, Lettres Bot. (1): 5-21.
- BRUNEL, J. F. & J. ROUX. 1981. *Phyllanthus* subsect. *Odontadenii* (Euphorbiaceae) au nord du fleuve Congo (Afrique de l'Ouest). Willdenowia 11: 69-89.
- CHAMBERS, K. L. 1955. A biosystematic study of the annual species of *Microseris*. Contrib. Dudley Herbarium (Stanford) 4: 207-312.
- CLAUSEN, J. 1951. Stages in the Evolution of Plant Species. Cornell Univ. Press, Ithaca, New York.
- GARBER, E. D. 1960. The genus *Collinsia* IX. Speciation and chromosome repatterning. Cytologia 25: 233-243.
- GOODSPEED, T. H. 1954. The genus *Nicotiana*. Chronica Botanica, Waltham, Massachusetts.
- GRANT, V. 1954. Genetic and taxonomic studies in *Gilia*. VI Interspecific relationships in the leafy-stemmed *Gilias*. Aliso 3: 35-49.
- . 1971. Plant Speciation. Columbia Univ. Press, New York.
- HAÏCOUR, R. 1983. La variabilité de compatibilité entre divers taxons de *Phyllanthus urinaria* L. (Euphorbiacées): Mise en évidence et perspectives ouvertes pour son analyse. Bull. Soc. Bot. France 130, Lettres Bot. (3): 207-226.
- . 1984a. Eléments d'analyse de la structure des populations et de l'évolution d'une espèce rudérale pantropicale, *Phyllanthus urinaria* L. (Euphorbiaceae). 1. Etude du polymorphisme de l'entité *P. urinaria* et premier essai de classification. Bull. Mus. Nat. Hist. Nat. Paris, IV. 6 (sect. B, Adansonia 1): 63-74.
- . 1984b. Eléments d'analyse de la structure des populations et de l'évolution d'une espèce rudérale pantropicale *Phyllanthus urinaria* L. (Euphorbiaceae). 2. Etude de la variation génétique et de la traduction phénotypique. Bull. Mus. Nat. Hist. Nat. Paris, IV. 6 (sect. B, Adansonia 2): 157-191.
- HALL, B. M. 1955. Genetic analysis of interspecific hybrids in the genus *Bromus*, section *Ceratochloa*. Genetics 40: 175-192.
- HEISER, C. B., C. MARTIN & D. M. SMITH. 1962. Species crosses in *Helianthus* I. Diploid species. Brittonia 14: 137-147.
- LEWIS, H. & M. LEWIS. 1955. The genus *Clarkia*. Univ. Calif. Publ. Bot. 20: 241-392.
- MONNIER, M. 1973. Croissance et développement des embryons globulaires de *Capsella Bursa-pastoris* cultivés in vitro dans un milieu à base d'une nouvelle solution minérale. Bull. Soc. Bot. France, Mém., Coll. Morphologique, 179-194.
- ROSSIGNOL, L., M. ROSSIGNOL & R. HAÏCOUR. 1987. A systematic revision of *Phyllanthus* subsection *Urinaria* (Euphorbiaceae). Amer. J. Bot. 74: 1853-1862.
- TRAN HA, N. M. & L. BANCILHON-ROSSIGNOL. 1976. Premières données sur le mode de reproduction des *Phyllanthus* (Euphorbiacées) découlant d'une étude cytogénétique comparée de six taxons de *P. odontadenius* Muell. Arg. à garnitures chromosomiques différentes ( $2n = 12, 24, 28, 56$ ). Rev. Cyt. Biol. Végét. 39: 201-234.
- & J. BELLIARD. 1976. Analyse morphologique et biométrique comparée de six taxons de *Phyllanthus odontadenius* Muell. Arg. à garnitures chromosomiques différentes ( $2n = 12, 24, 28, 56$ ) et de leur descendance. Rev. Gen. Bot. 83: 269-310.
- WEBSTER, G. L. 1967. The genera of Euphorbiaceae in the southeastern United States. J. Arnold Arbor. 48: 304-430.
- YARNELL, S. H. 1956. Cytogenetics of the vegetable crops. II. Crucifers. Bot. Rev. 22: 81-166.



---

# EARLY EVOLUTION OF *DALECHAMPIA* (EUPHORBIACEAE): INSIGHTS FROM PHYLOGENY, BIOGEOGRAPHY, AND COMPARATIVE ECOLOGY<sup>1</sup>

---

W. Scott Armbruster<sup>2</sup>

## ABSTRACT

*Dalechampia* contains over 120 species and occurs throughout the lowland tropics of Asia, Africa, and the New World. Most species in both the Old and the New World secrete terpenoid resin from large glandlike aggregations of bractlets in the pseudanthial inflorescences (blossoms) and are pollinated by bees that collect resin for use in nest construction. Using comparative chemical, morphological, and ecological data and phylogenetic analyses, I attempt to ascertain the early evolutionary and biogeographic events that led to the present distribution of species, character states, and pollination systems throughout the tropics. Available evidence suggests the genus originated in western Gondwana or South America in the mid Cretaceous or early Tertiary, respectively, and spread throughout the tropics by the rafting of land masses, or by migration across higher latitudes when they had subtropical climates, or both. There is some evidence for two migrational events between the Old and New Worlds. The original pollination system may have involved pollination by pollen-collecting insects or by fragrance-collecting male euglossine bees. The origin of pollination by resin-collecting bees appears to have been a consequence of a preadaptation (exaptation): the earliest *Dalechampia* apparently used triterpene resins to defend flower parts against attack by herbivores and/or microbes, and resin secondarily assumed the role of pollinator reward. The mutualistic relationship with resin-collecting bees may have originated independently in the Old and New Worlds.

---

Trans-oceanic disjunctions of similar plant species have intrigued plant biologists since the earliest botanical explorers began to report them. We have long wondered how such disjunctions arose, when and how dispersal occurred, and how populations evolved in isolation from each other. Disjunctions create natural evolutionary experiments in which two or more populations of similar genetic stock evolve independently in response to local environmental conditions. An interesting challenge is to unravel the history of disjunctions and reconstruct the evolutionary events that have occurred since the isolation of plant populations.

Research on this topic has rarely proceeded beyond the phase of description of the distributions of disjunct sister taxa and their taxonomic relationships. This is because research on historical phenomena, especially those as ancient as the events creating trans-oceanic disjunctions, is extremely difficult, and until recently required a detailed fossil

record. The development of powerful computer-assisted methods of phylogeny reconstruction, however, now makes it realistic to attempt retrospective analysis of ancient biogeographic and evolutionary processes in the absence of a fossil record (see Donoghue, 1989). The field of vicariance biogeography represents one such approach in its attempt to use analyses of phylogenetic relationships of several independent taxa as an aid to ascertaining the processes that affected the distribution of those taxa (see review in Humphries & Parenti, 1986).

In the present paper I consider four questions about the early evolutionary and biogeographic events that affected the members of the pantropical euphorb genus *Dalechampia*: (1) Where and when did the genus originate? (2) What series of events led to the present geographical distribution of species, character states, and pollination systems? (3) What was the original pollination system in the

---

<sup>1</sup> I thank M. Huft and G. L. Webster for organizing the symposium that elicited this contribution, D. Lees and L. D. Otero for generously providing me with unpublished data, and M. E. Edwards, G. Levin, P. M. Richardson, and an anonymous reviewer for comments on earlier versions of this manuscript. Research was supported by grants BSR-8509031, BSR-9006607, and BSR-9020265 from the National Science Foundation (USA) and a grant from the National Geographic Society.

<sup>2</sup> Department of Biology and Wildlife and Institute of Arctic Biology, University of Alaska-Fairbanks, Fairbanks, Alaska 99775-0180, U.S.A.



genus, and how did the early diversification of pollination systems occur? (4) How, when, and where did the novel mutualism with resin-collecting bees arise? Using the cladistic method of phylogeny reconstruction, I develop explicit hypotheses addressing the four historical questions. I evaluate the hypotheses by considering independent data on the relationships between the plants and their herbivores and pollinators.

#### NATURAL HISTORY AND DISTRIBUTION OF *DALECHAMPIA*

*Dalechampia* is distinctive within the Euphorbiaceae: the ca. 120 species have pseudanthial inflorescences (blossoms) in which usually 3 pistillate flowers and usually 4–16 staminate flowers are united into subterminal and terminal cymes, respectively. Close examination of the *Dalechampia* inflorescence, however, indicates that its arrangement is probably homologous to that of the inflorescences of *Tragia* and *Plukenetia* (although in these taxa the inflorescences are not pseudanthial, i.e., do not function as single pollination units as in *Dalechampia*) (Webster & Webster, 1972). These three taxa are also similar in habit. Unlike most other euphorbs, *Tragia* and *Plukenetia* comprise viny species and *Dalechampia* comprises mostly viny species. *Tragia* and *Dalechampia* are also similar in having urticating, crystaliferous trichomes of virtually identical morphology (Webster & Webster, 1972). For these reasons, Webster (1994) has recently proposed that *Dalechampia* be included in tribe Plukenetieae (with *Tragia* and *Plukenetia*) rather than isolated in its own tribe as in earlier treatments (e.g., Webster, 1975). The striking similarities among these three genera and their inferred close relationship make it possible to use, with considerable confidence, *Tragia* and *Plukenetia* as candidate outgroups in the phylogenetic analyses described below.

Despite the relatively uniform blossom morphology in *Dalechampia*, there is considerable variation in the reproductive biology. Most species in both the Paleotropics and Neotropics offer resin as a pollinator reward and are pollinated by female or worker bees that collect resin from a variety of plant sources and use it in nest construction (Camerloher, 1931; Armbruster & Webster, 1979; Armbruster, 1984; Armbruster & Mziray, 1987). The resin is secreted by a cluster of modified bractlets (the "resin gland") associated with the staminate flowers (Webster & Webster, 1972). About a dozen species in the New World offer fragrances as a pollinator reward and are pollinated by fra-

grance-collecting male euglossine bees (Apidae: Euglossini) (Armbruster & Webster, 1979; Armbruster et al., 1989; Armbruster et al., 1992). These bees apparently use fragrances as precursors in the biosynthesis of sex pheromones (Dressler, 1982; Whitten et al., 1989). Several species in the Neotropics and in Madagascar appear to produce no reward for pollinators other than pollen; these species are pollinated by pollen-collecting bees and beetles (Armbruster et al., 1993).

Species of *Dalechampia* are found throughout the lowland tropics of Asia, Africa, and the New World, although the greatest diversity is expressed in South America (Fig. 1). Species bearing resin glands (and pollinated by resin-collecting bees) are by far the most widespread; they occur in every major region where *Dalechampia* is found, except Madagascar. Those species pollinated by male euglossine bees are necessarily restricted to the Neotropics, because euglossines are endemic to the New World. Species lacking the resin gland and pollinated by pollen-seeking insects are most diverse in Madagascar, but are also found in northern South America and southern Central America.

Several authors have concluded that the glandless species found in Madagascar form the most basal species group in the genus (Michaelis, 1924; Magin, 1987), while Webster & Armbruster (1991) considered the glandless species of northern South America (sect. *Rhopalostylis*) to form probably the most basal group. It is possible that the Madagascan and South American glandless species, which share numerous characteristics, form a single basal monophyletic or paraphyletic cluster of species. This raises the possibility that *Dalechampia* has a complex biogeographic history, with multiple migrations among the continents and independent evolution of the mutualism with resin-collecting bees in the Old and New World tropics (Armbruster & Mziray, 1987). Alternatively, if the resemblance between Madagascan species and members of section *Rhopalostylis* is the result of homoplasy (character convergence and/or reversals), there may be no reason to reject a very simple biogeographic history involving an origin in the New or the Old World, followed by dispersal to the other hemisphere.

Armbruster & Mziray (1987) proposed four alternative dispersal hypotheses that could explain the present distribution of *Dalechampia* species: (1) recent long-distance dispersal of species among continents, (2) migration across mid- to high-latitude land bridges during the Tertiary, when these latitudes had subtropical climates, (3) a nearly continuous western Gondwanan distribution in the mid



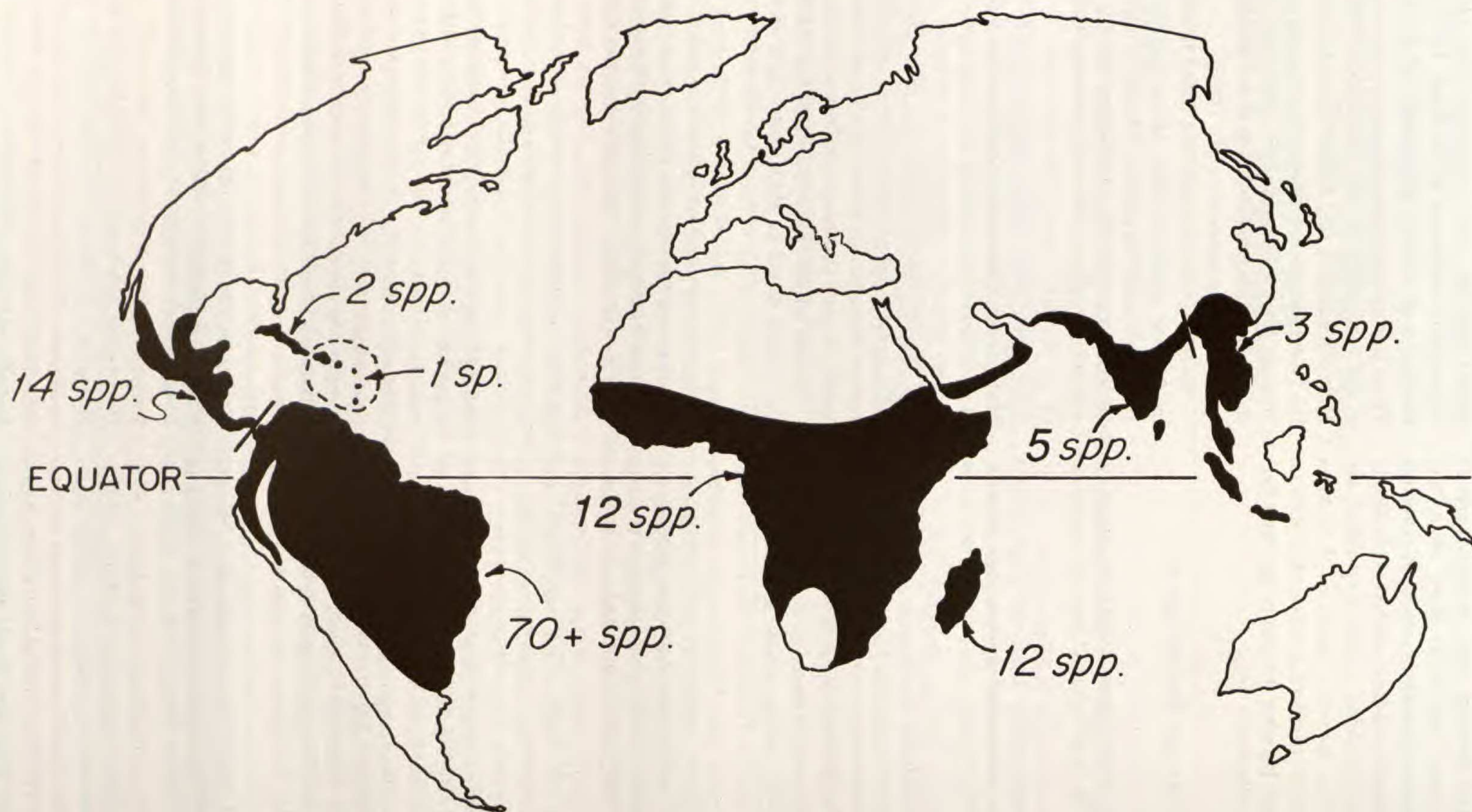


FIGURE 1. Approximate distribution and number of species of *Dalechampia* in the Paleo- and Neotropics.



to late Cretaceous disrupted by subsequent continental drift, and (4) distribution of primitive *Dalechampia* in South America, Africa, and Madagascar by continental drift, followed by extinction of primitive species in Africa and a second migration (either by long-distance dispersal or migration via higher latitudes) of more derived species between South America, Africa, and Asia. Circumstantial evidence they provided supported the second, third, and fourth hypotheses, but not the first. They did not attempt to identify the site of origin of the genus nor the direction dispersal events. The purpose of the present study is to use phylogenetic analyses of the New and Old World species to refine these biogeographic hypotheses and specify possible sites of origin of the genus, directions of dispersal, pollination ecology of the earliest species, and the site(s) of origin of the novel mutualism with resin-collecting bees.

#### PHYLOGENETIC INFERENCE

##### METHODS

To reconstruct phylogenetic relationships among Old and New World species of *Dalechampia*, I conducted cladistic analyses on a data set of 46 morphological characters (Table 1) from 25 neotropical, 4 African, and 3 Madagascan species of *Dalechampia* and representatives of two sister genera, *Tragia* and *Plukenetia*, to serve as possible outgroups (Appendix). The species of *Dalechampia* were chosen to represent the major species groups in the genus. I used the heuristics algorithm of PAUP 3.0 (see Swofford, 1993) on a Macintosh microcomputer to find the shortest trees. In this analysis ancestral states were not specified (i.e., characters were not polarized). Instead, PAUP determined the ancestral states through global parsimony (Maddison et al., 1984), selecting the more parsimonious of the two sister taxa to be the outgroup. I used MacClade 3.0 (see Maddison & Maddison, 1992) to explore alternate tree topologies, analyze character evolution, assess tree congruence with alternative biogeographic hypotheses, and produce graphics.

After an initial run with the full set of taxa (including the sister genera), I eliminated all but one member of each stable, well defined clade of neotropical species and all but two of the very similar taxa in the paraphyletic section *Rhopalostylis*. This reduced the number of New World taxa to 11 and Old World taxa to 4. The decreased number of taxa greatly reduced PAUP run time on the computer. To further reduce run times the results of the initial cladistic analysis were used to

polarize characters and specify ancestral character states, and the outgroups were eliminated. These procedures left unaltered the relative positions of Old and New World taxa.

Iterative cladistic runs were conducted to determine the sensitivity of cladistic results to initial assumptions about character reversibility (Table 2). I varied the assumption of character reversibility (reversible vs. irreversible between plesiomorphic [primitive] and apomorphic [derived] states) for each of three selected characters, and in all possible combinations of the three characters.

I then examined each of the numerous maximally parsimonious trees to determine the simplest biogeographic and evolutionary scenarios that could explain the distribution of taxa, character states, and pollination systems and were consistent with the tree. This was accomplished by manually mapping distribution and pollination ecology data onto each tree using the parsimony assumption (see Maddison & Maddison, 1992).

##### RESULTS

When all characters were assumed reversible, cladistic analysis of the set of 34 taxa yielded 436 equally parsimonious trees (120 steps, consistency index [CI] = 0.47). The large number of equally parsimonious trees reflects instability in the placement of a few similar taxa (Fig. 2). The gland characteristics, pollination ecology, and geographical distribution of the various ancestral taxa (nodes of the tree) were inferred by parsimony from the distribution of these characteristics across the extant taxa (Maddison & Maddison, 1992). "Mapping" of characteristics onto the consensus tree allowed inference of the history of these ecological and biogeographic features. Despite the abundance of equally parsimonious trees, the evolutionary and biogeographic implications of this cladistic analysis generally supported Hypothesis 1 (Table 3): *Dalechampia* originated in the Neotropics or western Gondwana, and the earliest species were initially pollinated by either fragrance-collecting male euglossines or pollen-collecting insects (Figs. 2, 3). *Dalechampia* evolved a mutualistic (pollination) relationship with resin-collecting bees in the Neotropics, and relatively recently in the genus's evolutionary history a resin-reward species colonized Africa. More recently, there occurred a migration from Africa to Madagascar. The colonists of Madagascar apparently evolved pollination by pollen-collecting bees and/or beetles just after they colonized Madagascar.

Cladistic analysis of the reduced set of taxa



TABLE 1. Characters and character states used in phylogenetic analyses. The "0" character state is the ancestral condition, as determined by global-parsimony outgroup analysis. \* indicates character was not used in the phylogenetic analysis.

1. Nature of proximal involucre bract: 0 = stipuliform; 1 = involucre.
2. Nature of distal involucre bract: 0 = stipuliform; 1 = involucre.
3. Position of proximal involucre bract: 0 = separated from pistillate cymule; 1 = adjacent to pistillate cymule.
4. Stipels on proximal involucre bract: 0 = present; 1 = absent.
5. Number of basal veins of involucre bracts: 0 = 3; 1 = 5 or more.
6. Color of involucre bracts: 0 = white to pale green; 1 = pink; 2 = yellow; 3 = brown; 4 = deep green.
7. Shape of base of involucre bracts: 0 = cuneate; 1 = cordate.
8. Shape of tip of involucre bracts: 0 = entire, acute; 1 = lobed.
9. Persistence of involucre bracts: 0 = deciduous shortly after anthesis; 1 = persistent into fruiting.
10. Number of pistillate sepals: 0 = 5-6; 1 = >7; 2 = 4.
11. Margins of pistillate sepals: 0 = entire; 1 = lobed.
12. Presence of distal pistillate involucellar bractlets: 0 = present; 1 = absent.
13. Size of distal pistillate involucellar bractlets: 0 = small, stipuliform; 1 = large, enveloping.
14. Shape of pistillate sepals (excluding lobes): 0 = ovate; 1 = linear.
15. Style shape: 0 = cylindrical to slightly dilated at tip; 1 = clavate; 2 = strongly dilated at tip; 3 = umbraculiform; 4 = deeply lobed.
16. Number of stamens: 0 = 5-10; 1 = >11.
17. Fusion of staminate involucellar bracts: 0 = free; 1 = connate.
18. Symmetry of staminate pleiochasial arms: 0 = decussate; 1 = bilateral.
19. Number of staminate pleiochasial arms: 0 = 4; 1 = 5.
20. Arrangement of staminate bractlets: 0 = symmetrically distributed; 1 = clustered into "gland."
21. Tip of staminate bractlets: 0 = acute; 1 = truncate.
22. Margins of staminate bractlets: 0 = entire; 1 = lacinate.
23. Resin secretion by staminate bractlets: 0 = absent; 1 = present.
24. Resin color: 0 = clear, whitish; 1 = yellow, orange; 2 = maroon; 3 = blue.
25. Staminate sepal color: 0 = green to whitish; 1 = pink.
26. Stigma color: 0 = pale to deep green; 1 = pink to maroon.
27. Habit: 0 = vine; 1 = shrub.
28. Relative petiole length: 0 = >1/4 limb length; 1 = <1/10 limb length.
29. Leaf shape: 0 = simple, entire; 1 = compound; 2 = simple, 3-5-lobed.
30. Leaf venation: 0 = palmate; 1 = pinnate.
31. Leaf stipules: 0 = stipuliform; 1 = foliose.
32. Involucre bract stipules: 0 = stipuliform; 1 = foliose.

TABLE 1. Continued.

33. Pollen shape: 0 = prolate; 1 = subspherical.
34. Seed surface: 0 = smooth; 1 = rugulose; 2 = tuberculate.
35. Seed shape: 0 = round; 1 = 3-angled; 2 = lenticular; 3 = slightly flattened.
36. Petiole of proximal involucre bract: 0 = present; 1 = absent.
37. Pollen exine: 0 = reticulate; 1 = psilate.
38. Relative size of pistillate sepals in fruit: 0 = <1/2 capsule length; 1 = approximately capsule length; 2 = fully enveloping capsule.
39. Stinging crystalliferous trichomes: 0 = absent; 1 = present.
40. Number of carpels: 0 = 3; 1 = 4.
41. Number of sterile arms in staminate pleiochasium: 0 = 0; 1 = 1; 2 = 2.
- \*42. Pollination: 0 = pollen-collecting bees (*Trigona* workers) or cetoniine beetles; 1 = resin-collecting bees (*Hypanthidium* females, *Trigona* workers, *Euglossa*, *Eulaema*, and *Eufriesea* females); 2 = fragrance-collecting male euglossine bees (*Euglossa*, *Eulaema*, *Eufriesea*).
43. Fusion of distal pistillate bractlets: 0 = free; 1 = connate.
44. Presence of leaf stipels: 0 = absent; 1 = present.
45. Leaf nectary: 0 = absent; 1 = present.
46. Inflorescence condensation: 0 = not condensed; 1 = highly condensed.
47. Expression of leaf stipules: 0 = well developed; 1 = reduced to absent.

yielded 50 equally parsimonious trees (70 steps, CI = 0.61). All of these were consistent with the biogeographical and evolutionary conclusions drawn from the analysis of the full set of taxa (Table 2, Fig. 4).

How reasonable is it to assume that all characters can evolve forward and backward repeatedly? Is it realistic to expect that structures are regained as easily (frequently) as they are lost? For certain characters at least, the answer may be "no." Upon reflection I became uncomfortable with allowing characters 17 (fusion of male involucell), 20 (presence of a "resin gland"), and 41 (presence of sterile pleiochasial arms) to revert to the plesiomorphic state as they do in all 436 (first analysis) and 50 (second analysis) maximally parsimonious trees. It seemed unlikely (although not impossible) from a developmental perspective for these characters to revert from the derived (apomorphic) condition back to the primitive (plesiomorphic) condition. For example, consider character 17: whether the involucellar bracts of the staminate subinflorescence (pleiochasium) are free, each subtending a pleiochasial arm, or are connate (fused). Based on outgroup comparisons, the former state appears to be plesiomorphic and the latter derived. Al-



TABLE 2. Consequences of varying initial assumptions of reversibility of characters upon the biogeographic/evolutionary conclusions drawn from the most parsimonious trees obtained by cladistic analysis of the reduced list of *Dalechampia* taxa. Numbers indicate biogeographic/evolutionary hypothesis(es) with which the most parsimonious trees were consistent (see Table 3). Numbers in parentheses indicate the proportion of maximally parsimonious trees consistent with each hypothesis.

Character assumed irreversible	Alone	In combination with character		
		20	41	17, 20
17. Fusion of staminate bracts	2 (96%) <sup>1</sup>	3 (60%) <sup>2</sup>	3 (100%) <sup>3</sup>	—
	4 (3%)	2, 3 (33%)		
	3, 4 (1%)	5 (4%)		
		2, 5 (4%)		
20. Presence of resin gland or its vestige	3 (60%) <sup>2</sup>	—	3 (100%) <sup>3</sup>	—
	3, 5 (33%)			
	5 (4%)			
	2, 5 (4%)			
41. Presence of sterile arms in staminate pleiochasium	3 (100%) <sup>3</sup>	—	—	3 (100%) <sup>3</sup>
None	1 (100%) <sup>4</sup>	—	—	—

<sup>1</sup> N = 252 equally parsimonious trees.  
<sup>2</sup> N = 114 equally parsimonious trees.  
<sup>3</sup> N = 42 equally parsimonious trees.  
<sup>4</sup> N = 50 equally parsimonious trees.

though the shift to the connate condition may not be expected to occur frequently, it seems even less likely that the connate involucre would split up into the “correct” number of bractlets, in the arrangement that recreates the original relationship between bracts and pleiochasial arms. Thus if there is homoplasy in this character, it seems more likely to reflect convergence than reversal.

The assumption of irreversibility was applied to each of these characters in turn and in all possible combinations. The cladograms from the seven different runs generated hypotheses 3, 2, 5, and 4 in order of frequency (Tables 2, 3). By far the most commonly supported hypothesis was H<sub>3</sub>, with H<sub>2</sub> a distant second. For example, the assumption that a sterile pleiochasial arm cannot readily become fertile again resulted in 42 equally parsimonious trees that all support H<sub>3</sub>: *Dalechampia* originated in the Neotropics or western Gondwana, a glandless lineage colonized the Paleotropics (by the breakup of Gondwana or migration via higher latitudes), mutualisms with resin-collecting pollinators evolved separately in the Old and New Worlds, followed by recolonization of the Neotropics by Old World gland-bearing (resin-producing) species, extinction of the glandless species from most of Africa, and their persistence in Madagascar (Fig. 5).

The assumption that the fusion of staminate bracts is irreversible, when taken alone, produced

252 maximally parsimonious trees, 96% of which supported H<sub>2</sub> (Table 2). In this hypothesis, *Dalechampia* originated in the Neotropics or western Gondwana, a glandless stock colonized the Paleotropics (by the breakup of Gondwana or migration via higher latitudes), the mutualism with resin-collecting bees originated in the Neotropics, followed by one or more additional colonizations of the Old World from the New by gland-bearing (resin-producing) species (Fig. 6).

All other assumptions and combinations of assumptions of irreversibility of characters yielded shortest trees that supported H<sub>3</sub> either all or most of the time (Table 2). Thus it appears that the most likely biogeographic/evolutionary hypotheses are H<sub>1</sub>, H<sub>3</sub>, and H<sub>2</sub>. Which of these one favors depends not only on whether one assumes characters in general are reversible or irreversible, but also on which particular character or combination of characters are assumed irreversible. Assumptions about the irreversibility of certain characters have stronger effects on biogeographic conclusions than others. That is, assumptions of irreversibility of certain characters appear to be dominant, in their effects, over others. The “pecking order” apparent in Table 2 is Character 41 > Character 20 > Character 17.

All of the phylogenetic hypotheses derived from the cladistic analyses lead to two basic conclusions. (1) *Dalechampia* originated in the Neotropics or



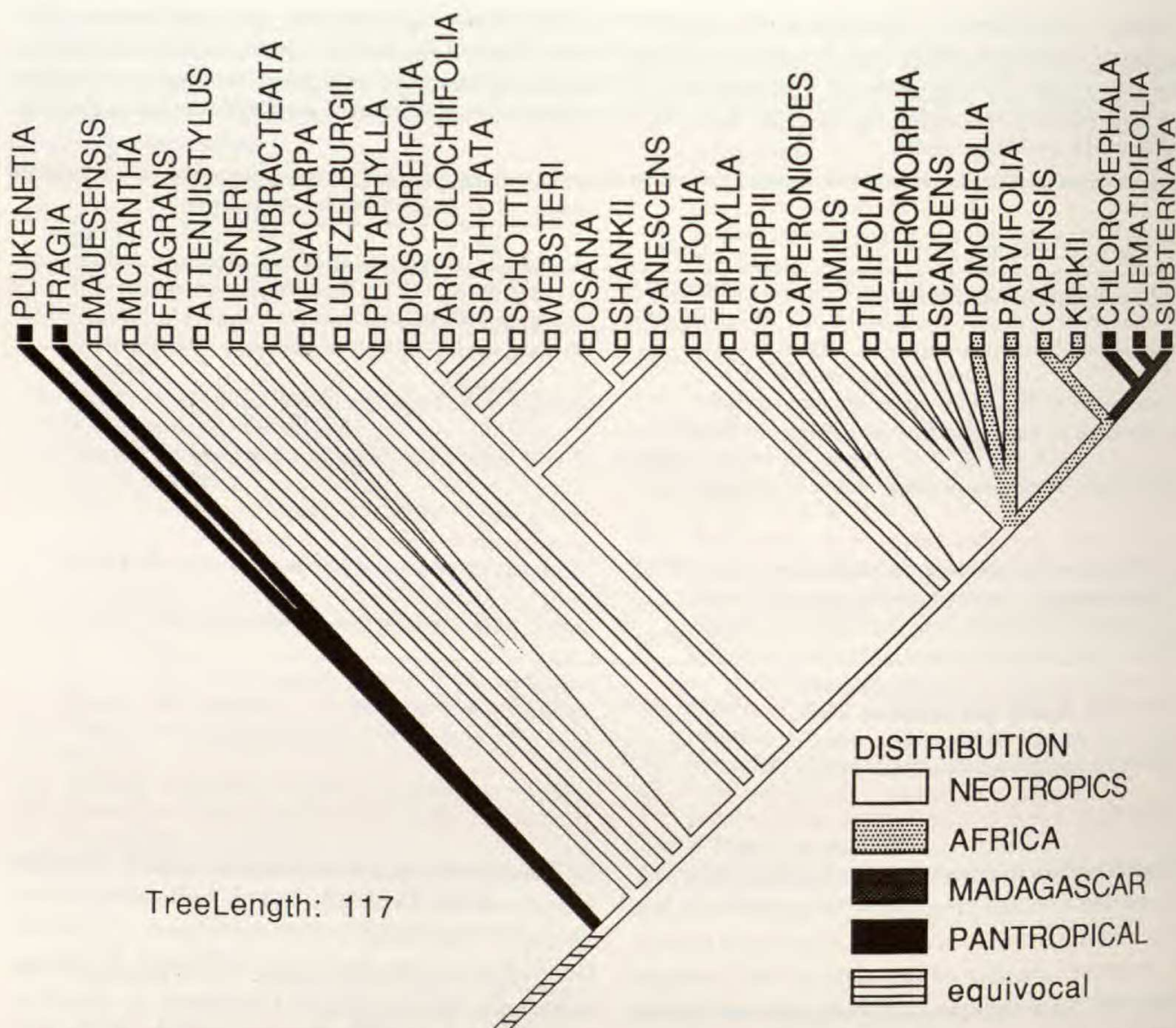


FIGURE 2. Consensus tree for set of 32 *Dalechampia* species and two candidate outgroups (*Tragia* and *Plukenetia*) based on assumption that all characters are reversible. Taxa with unstable arrangements in the 436 maximally parsimonious trees are indicated by polytomies (points of branching of more than two taxa).

western Gondwana. (2) The earliest species were pollinated by pollen-collecting insects or fragrance-collecting male euglossine bees. Uncertainty remains as to when and in which direction dispersal between the Old and New Worlds occurred.

#### TESTS OF HYPOTHESES

There are several sources of independent data that could be used to evaluate the biogeographic/evolutionary hypotheses generated by phylogenetic analyses. These include information on the relationships among specialist insect herbivores on Old and New World *Dalechampia*, the chemical defense systems that *Dalechampia* uses against herbivores, details of pollination biology of Old and New World *Dalechampia*, and morphological details of the resin gland of Old and New World species.

#### SPECIALIST HERBIVORES ON *DALECHAMPIA*

There are several genera of nymphalid butterflies whose larvae appear to be specialist folivores on New and Old World *Dalechampia*. The phylogenetic relationships among the New and Old World butterflies may give us some clues about the history of their and their host plants' migrations among the Neotropics and Paleotropics.

Assuming that specialist *Dalechampia* folivores feed only on *Dalechampia*, one can make several specific predictions about the phylogenetic relationships between those of the New and Old Worlds, depending on the biogeographic scenario used to account for their present distribution. (1) If the initial dispersal of *Dalechampia* from the New World to the Old occurred by long-distance dispersal after the continents achieved close to their present positions, the butterfly herbivores in the



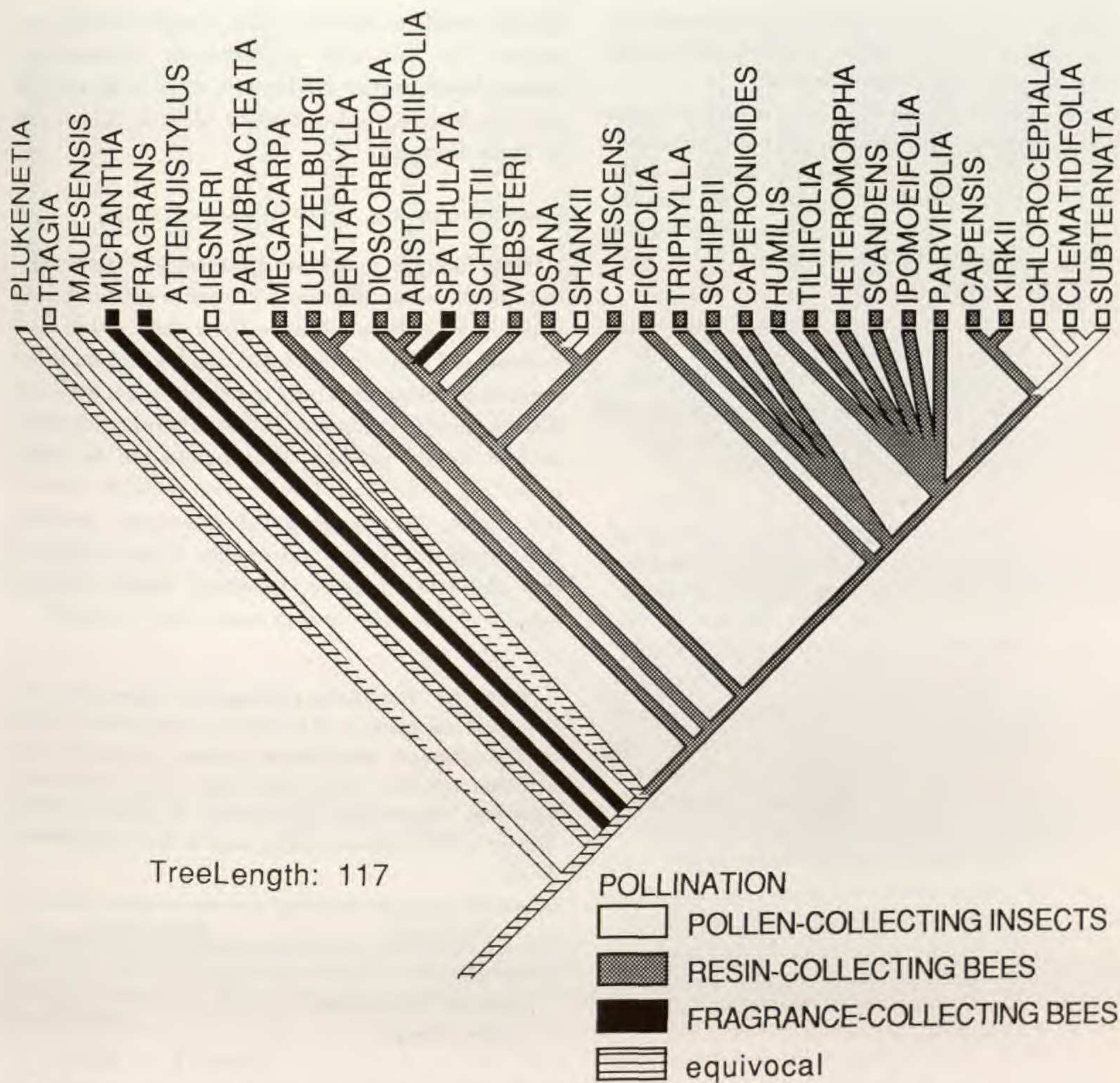


FIGURE 3. Same cladogram as is in Figure 2, with pollination systems mapped onto the branches.

Old and New Worlds should be completely unrelated. This is because it is extremely unlikely that both host plant and herbivore would have become established in the Paleotropics by long-distance dispersal from the New World, and the Old World herbivore fauna would more likely be the result of members of the local butterfly fauna evolving to feed on *Dalechampia*. (2) If the initial dispersal from the New World to the Old occurred by migration of a semi-continuous population stretching across North America and Europe or Asia in the early to mid Tertiary, when these continents had subtropical climates, the butterfly herbivores in the Old World should be closely related sister taxa of the New World species. This is because a semi-continuous population of host plants across the higher latitudes should have allowed a semi-con-

tinuous population of the herbivores to also disperse into the Old World. (3) If the initial dispersal from the New World to the Old occurred by a continuous population being split into two or more populations by the rafting apart of the continents (the breakup of Gondwana) in the Cretaceous, the Old and New World herbivores should again be sister taxa, but not as closely related as in the second scenario. There is some ecological information available on butterfly herbivores that feed on *Dalechampia* (Table 4; see Armbruster, 1983; Armbruster & Mziray, 1987; DeVries, 1987). Unfortunately there is not yet detailed information available on their phylogenetic relationships. The systematic (Table 4) and phylogenetic information that is available indicates a close phylogenetic relationship between Old and New World taxa, possibly forming two



TABLE 3. Five most parsimonious biogeographic hypotheses derived from the cladistic analyses under varying assumptions about character reversibility.

H <sub>1</sub> .	The genus and the resin-collection mutualism originated in the New World, with a subsequent migration to the Old World from the New and the loss of the resin-collection mutualism in Madagascan taxa.
H <sub>2</sub> .	The genus originated in the New World or western Gondwana; an initial migration (or rafting) to the Old World from the New was followed by the evolution of the resin-collection mutualism in the New World, and then by a second migration to the Old World by gland-bearing species.
H <sub>3</sub> .	The genus originated in the New World or western Gondwana; an initial migration (or rafting) to the Old World was followed by the independent evolution of the resin-collection mutualism in Old and New Worlds, followed by a migration of gland-bearing species to the New World from the Old.
H <sub>4</sub> .	The genus and the resin-collection mutualism originated in the New World, followed by a migration of gland-bearing species to the Old World, loss of the mutualism in Madagascar, and finally recolonization of the New World by gland-bearing species.
H <sub>5</sub> .	The genus and the resin-collection mutualism originated in the New World, followed by two or more migrations of gland-bearing species to the Old World and subsequent recolonization of the New World by gland-bearing species.

groups with vicariant genera in both areas (Jenkins, unpublished manuscript; Armbruster & Mziray, 1987; Otero, 1990; Ackery, 1988). This observation generally supports the predictions of the hypotheses of early *Dalechampia* "migration" by continental drift and migration in the Tertiary via higher latitudes. It does not support the hypothesis of recent long-distance dispersal (see Armbruster & Mziray, 1987, for additional discussion). Thus the evidence from the relationship among the lepidopteran herbivores of the Old and New Worlds supports the hypotheses that show a fairly early colonization of the Old World from the New.

The observation that many of the lepidopterans that feed on *Dalechampia* may sometimes also feed on *Tragia* (Table 4), however, raises another possibility. It is possible that *Tragia* and its herbivores achieved a pantropical distribution prior to *Dalechampia*. If this were true, then the lepidopterans now specializing on *Dalechampia* in the Old

World could be derived from *Tragia*-feeding ancestors. In this case phylogenetic relationships among lepidopteran herbivores may yield insights into the biogeographic history of *Tragia*, but not of *Dalechampia*.

EVOLUTION OF THE RESIN REWARD SYSTEM

How likely is it that an unusual pollination system such as pollination by resin-collecting bees could have originated more than once within *Dalechampia*? Elsewhere in the plant kingdom it has apparently originated only one other time, in *Clusia* (Guttiferae) (Armbruster, 1984). Therefore, it seems at first highly unlikely that pollination by resin-collecting bees would have arisen multiple times in the genus. Any biogeographic scenario invoking this would also seem improbable. Consideration of how the system arose, however, makes multiple origins of the relationship seem more probable.

TABLE 4. Provisional phylogenetic classification and host-plant associations of lepidopteran herbivores feeding on *Dalechampia* and related genera. Systematic relationships and host plant information from Jenkins (unpublished manuscript), Armbruster & Mziray (1987), Ackery (1988), Otero (1990), and D. Lees (unpublished data).

Neotropics	Paleotropics
Nymphalidae	
Subfamily Eurytelinae	
Tribe Neptini	
	<i>Neptis</i> (T <sup>1</sup> , A, others)
Tribe Eurytelini	
<i>Biblis</i> (T)	<i>Byblia</i> (D, T, P)
<i>Mestra</i> (T, D)	<i>Mesoxantha</i> (T)
	<i>Neptidopsis</i> (D, T)
	<i>Ariadne</i> (T, R, D, Te, Ac)
	<i>Eurytela</i> (T, R, D, Te)
Tribe Epicaliini	
<i>Hamadryas</i> (D, T)	<i>Sallya</i> (D, T, others)
<i>Ectima</i> (D)	
<i>Panacea</i> (D??)	
<i>Batesia</i> (D??)	
<i>Catonephele</i> (A, D, V)	
<i>Myscelia</i> (D, Ad)	
<i>Nessaea</i> (P, A)	
Tribe Dynamini	
<i>Dynamine</i> (D, T)	

<sup>1</sup> Abbreviations for host plants: A = *Alchornia*, Ac = *Acalypha*, Ad = *Adelia*, D = *Dalechampia*, P = *Plukenetia*, R = *Ricinus*, T = *Tragia*, Te = *Tetracarpium*, V = *Veconcibea*.



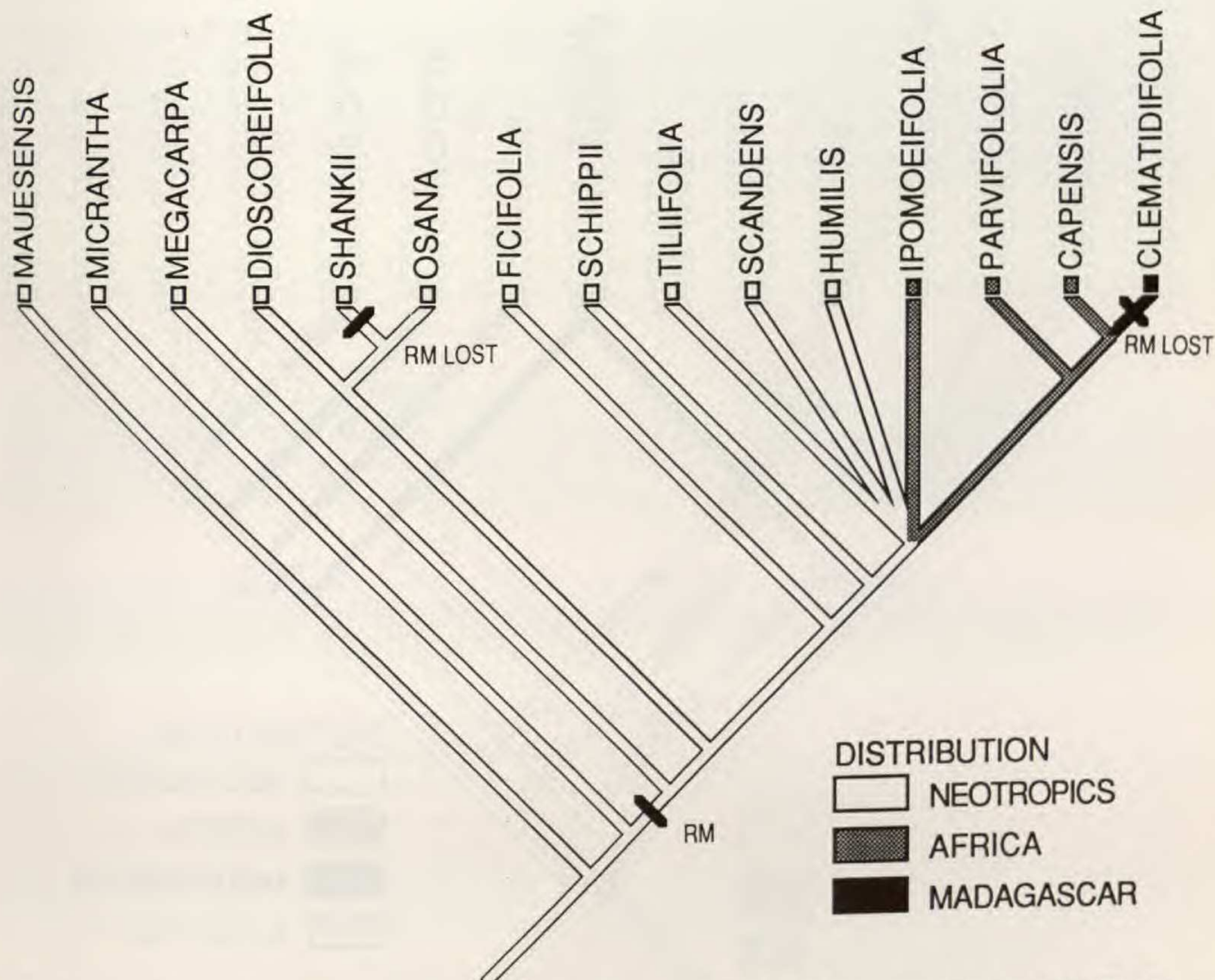


FIGURE 4. Consensus tree for the simplified set of taxa, assuming that all characters are reversible. The figure shows the species distribution mapped onto the cladogram and origins of the mutualism with resin-collecting bees ("resin mutualism" = RM). Taxa with unstable arrangements in the 50 maximally parsimonious trees are indicated by polytomies.

In all *Dalechampia* species that reward pollinating bees with triterpenoid resins, the secretory bractlets are clustered into a glandlike structure in the staminate subinflorescence. Comparative morphological studies of gland-bearing and non-gland-bearing species show that the bractlets of the gland are homologous to those that subtend the staminate flowers (and cover them in bud) in glandless species (Armbruster, unpublished obs.). The bractlets also secrete the same mixture of oxygenated triterpenes, even though the compounds play no role in pollination. These bractlets and their resinous secretions would instead appear to play a role in defending the staminate flowers from depredation by herbivorous insects or microbes. Also consistent with this idea is that some of the same compounds are also secreted by glands along the margins of young leaves, stipules, and/or sepals of many *Dalechampia* species, where they appear to play a role in defending those parts from herbivores (Armbruster, Howard & Debevec, unpublished data).

Species of *Dalechampia* identified in cladistic analyses as diverging early in the evolution of the genus do not use resin-collecting bees as pollinators, although they do produce resins from inflorescence bractlets. Character mapping indicates that the common ancestor of the rest of the genus also had this feature. This suggests that resin secretion in the genus first arose as a way of protecting reproductive tissues from attack by insect herbivores or microbes. Its presence in the inflorescence set the stage for resin-collecting bees to visit flowers to collect the resin for nest construction. These bees secondarily assumed the role of pollinators. The plant, in response, evolved higher rates of resin secretion, and the bractlets became organized into a gland from which the resin could be collected more efficiently. Thus the resin reward system probably evolved from a preadaptation (exaptation). Because the preadaptation was apparently "in place" very early in the evolution of the genus, it was probably present in the first *Dalechampia*.



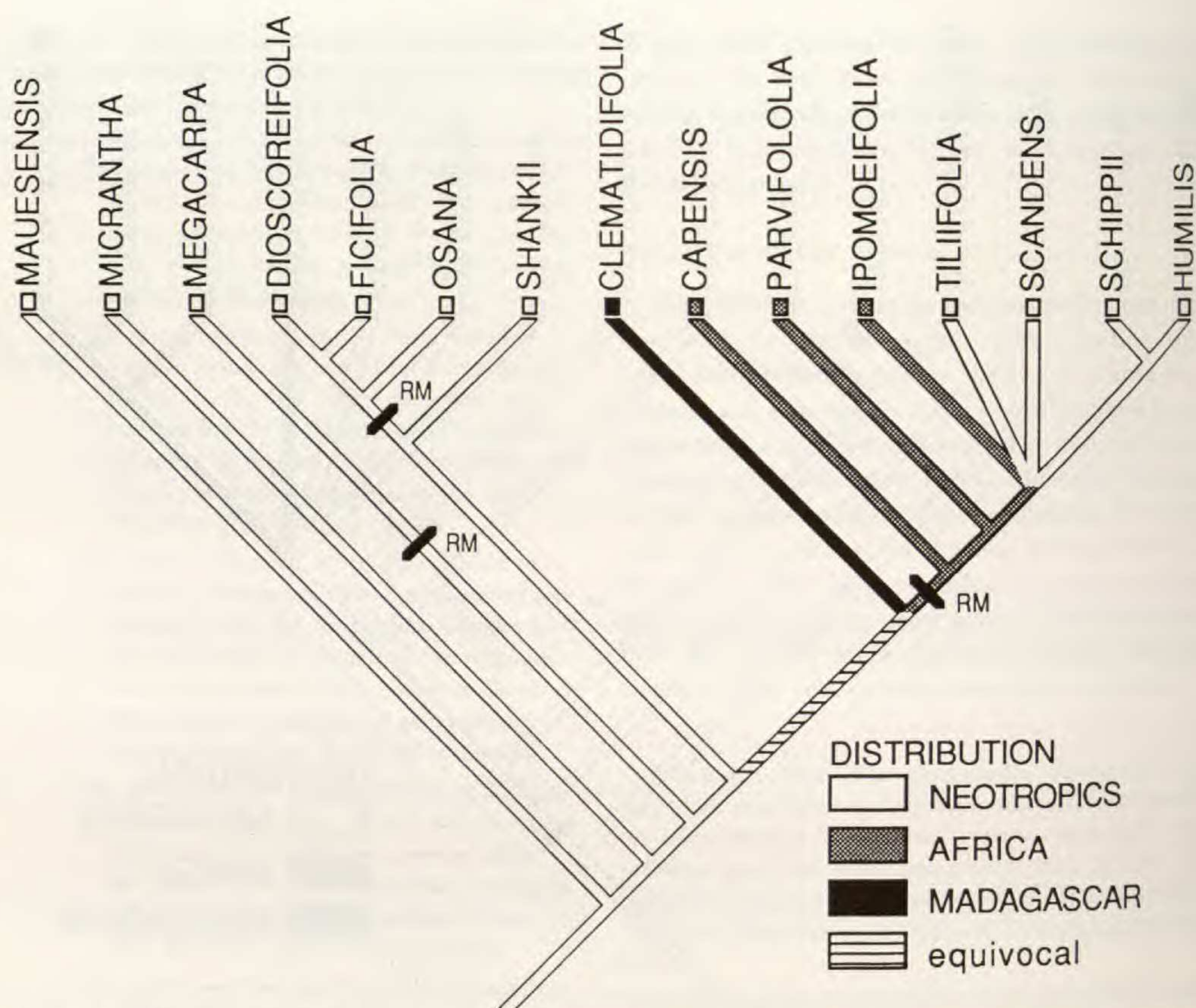


FIGURE 5. Consensus tree for the simplified set of taxa, assuming that all characters are reversible except character 41 (see Table 2), which was assumed irreversible. The figure shows the species distribution mapped onto the cladogram and origins of the mutualism with resin-collecting bees ("resin mutualism" = RM). Taxa with unstable arrangements in the 42 maximally parsimonious trees are indicated by polytomies.

to arrive in the Old World, as well as in the New World species. This is confirmed by the secretion of "defense" (non-reward) resins by many of the Madagascan species as well as several members of section *Rhopalostylis*. Thus the stage would have been set similarly in both the Paleotropics and Neotropics for the evolution of the mutualism with resin-collecting bees. Resin-collecting bees were probably already present in both the Paleo- and Neotropics (Michener, 1979). It thus seems not so unlikely that the resin-collecting mutualism might have originated independently in both places.

Another observation is consistent with two separate origins of the resin gland and resin-reward system. If the resin gland originated independently more than once, we might expect to see subtle differences in the structure of the gland. If the resin glands throughout the genus were of identical structure, it would suggest a single origin of the gland. There are actually two distinct kinds of resin gland. Members of sections *Dioscoreifoliae* and

*Cremophyllum* have resin glands composed of a single concentric whorl of resiniferous bractlets derived from three pleiochasial arms. The gland-bearing species of the Old World and most of the more derived species of the New World have resin glands composed of two rows of nearly parallel platelike bractlets which are apparently derived from four pleiochasial arms. The two forms of gland are consistent with two origins of the resin gland. The distribution of the two gland types is consistent with the phylogeny that supports biogeographic Hypothesis 3: one migration to the Old World, a separate origin of the resin gland in the Old and New Worlds, followed by a recolonization of the New World by species bearing the Old World gland type (Fig. 5).

There are two final aspects of the pollination ecology that may have bearing on our biogeographic hypotheses. First, if *Dalechampia* had tight relationships with resin-collecting pollinators prior to its colonization of the Old World (as it apparently



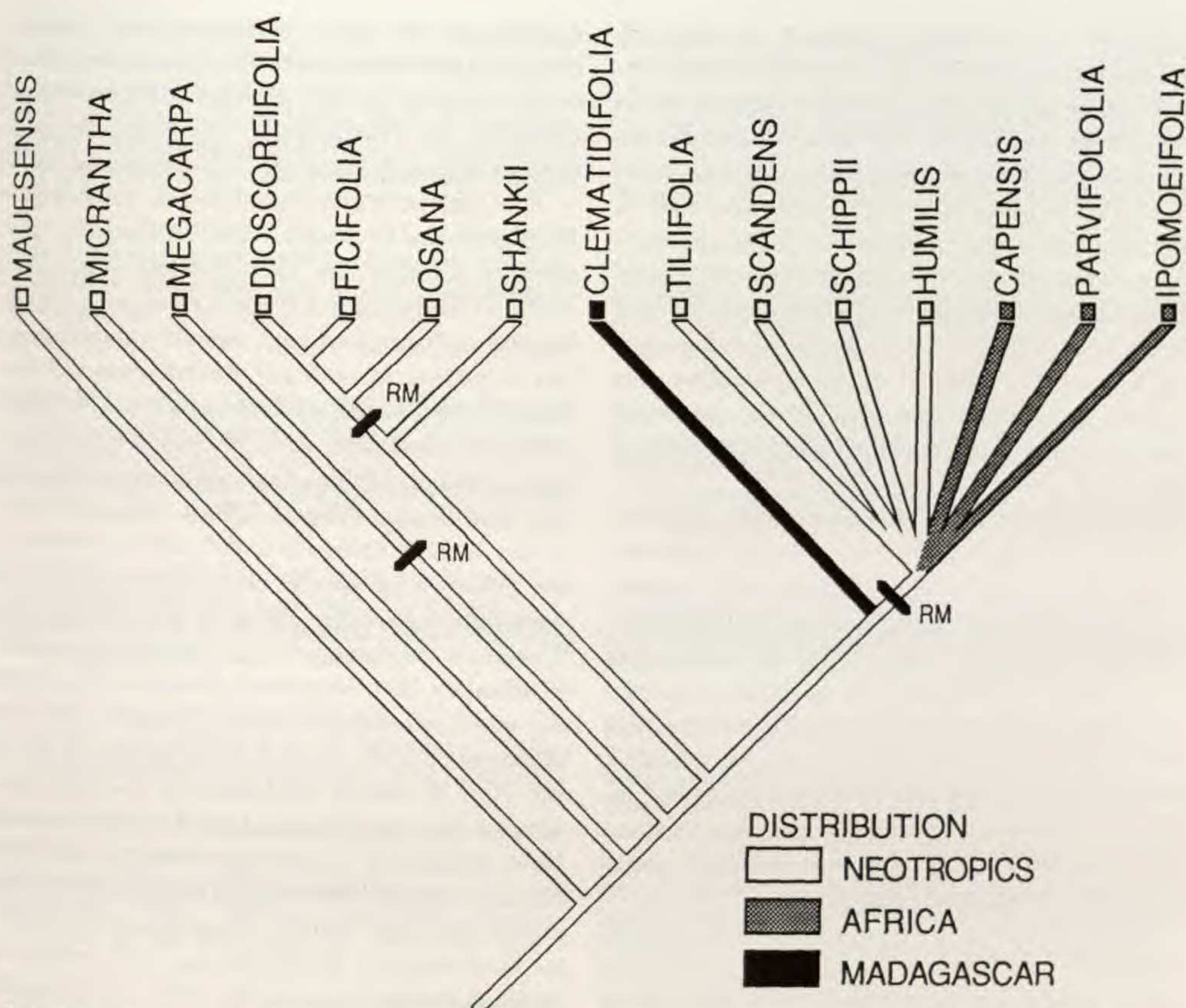


FIGURE 6. Consensus tree for the simplified set of taxa, assuming that all characters are reversible except character 17 (see Table 2), which was assumed irreversible. The figure shows the species distribution mapped onto the cladogram and origins of the mutualism with resin-collecting bees ("resin mutualism" = RM). Taxa with unstable arrangements in the 252 maximally parsimonious trees are indicated by polytomies.

did with lepidopteran symbionts), and it colonized the Old World by some mode other than long-distance dispersal, we might expect to see sister genera of bees visiting *Dalechampia* on either side of the Atlantic as we observed in the lepidoptera. We do not see this; there are not close phylogenetic relationships between the major pollinators in the New World and the Old. The most likely candidates, *Hypanthidium* on neotropical *Dalechampia* and *Pachyanthidium* on South African *Dalechampia* (Steiner & Whitehead, 1990; Armbruster & Steiner, 1992), are not particularly close within the Anthidiini (C. D. Michener, pers. comm.). This suggests dispersal between continents either was long-distance over oceanic barriers to bees, or occurred prior to the evolution of the resin mutualism (consistent with  $H_3$  but not  $H_1$ ), or somehow occurred without the bees "following" the plant.

A somewhat surprising feature of  $H_1$  is that it has the *Dalechampia* that colonized Madagascar

abandoning pollination by resin-collecting bees and reverting to pollination by pollen-collecting bees and beetles. This is surprising because pollination by resin-collecting bees appears to be a very successful pollination system, as evidenced by its abundance in the genus (some 80% of *Dalechampia* species are pollinated in this way). If this occurred, we could expect there to be some disadvantage to pollination by resin-collecting bees in Madagascar. There might actually be such a disadvantage; according to C. D. Michener (pers. comm.), except for tiny *Trigona* spp., which are often too small to be effective pollinators (see Armbruster & Mzi-ray, 1987; Armbruster, 1988), resin-collecting bees are notably uncommon in Madagascar.

#### DISCUSSION AND CONCLUSIONS

In this study I have tried to illustrate the advantages of using the results of cladistic analyses to develop and refine hypotheses about the bio-



geographic and evolutionary history of extant organisms for which there are no detailed fossil records. However, many uncertainties remain, and it is essential to explore through iterative analysis the consequences of making different assumptions about character evolution. The use of molecular data to infer phylogeny may solve some of the problems and uncertainties illustrated here, but even molecular phylogenies often may be ambiguous (see Sanderson & Donoghue, 1989). Tests of phylogenetic and historical hypotheses using independent data (such as information on symbionts) are necessary if we are to progress beyond the stage of hypothesis generation.

In the present study, I used cladistic results to generate and refine several hypotheses explaining the present distribution of *Dalechampia* species and their pollination systems. Three competing hypotheses seem most likely, and independent data are needed to distinguish among these. In particular, information on the genetics and development of flowers and inflorescences would be valuable, because the phylogenetic and biogeographical inferences made were sensitive to assumptions about the reversibility to the primitive character states of certain inflorescence characters.

Independent ecological information was used to evaluate the likelihood of the hypotheses generated from phylogenetic information. Data from insect herbivores and pollination of *Dalechampia* best support Hypothesis 3. The evidence, however, does not exclude Hypotheses 1 or 2. Hypothesis 1 depends on the assumption that all morphological characters can revert to their primitive stages. Whether this is realistic remains to be determined.

It appears that *Dalechampia* originated in the Neotropics or western Gondwana. The earliest species of *Dalechampia* probably employed fragrance-collecting male euglossine bees or pollen-collecting insects as pollinators. The mutualism with resin-collecting bees may have evolved separately in the Old and New Worlds (Hypothesis 3), or may have evolved only in the New World (Hypotheses 1 and 2).

The simplest biogeographic scenario is proposed in Hypothesis 1: *Dalechampia* originated in the New World, evolved a mutualism with resin-collecting bees there, and subsequently colonized Africa and Asia, and most recently, Madagascar, where the mutualism with resin-collecting bees was lost. This explanation is similar to explanations of the dispersal history of a number of plant groups (Raven & Axelrod, 1974). For example, the usual explanation of pantropical distribution of the Malpighiaceae is that the group originated in South

America in the late Cretaceous/early Tertiary, evolved a mutualism with oil-collecting bees (based on oil secretion by calyx glands), and more recently colonized the Paleotropics, where the mutualism was lost (Raven & Axelrod, 1974; Anderson, 1979).

A recent re-evaluation of floral morphology of Malpighiaceae by Vogel (1990) leads to an alternative conclusion: the Malpighiaceae originated in western Gondwana in the mid-Cretaceous, and continental drift resulted in primitively glandless species occurring in both the Paleotropics and Neotropics. One (or several?) lineage(s) in the Neotropics evolved a mutualism with oil-collecting bees, and later, members of this advanced lineage recolonized the Paleotropics (Vogel, 1990). This scenario is similar to Hypotheses 2 and 3 for *Dalechampia*: the presence of species with predominately plesiomorphic character states in the Old and New Worlds is explained by a widespread, possibly Gondwanan distribution of *Dalechampia* during the mid-Cretaceous to early Tertiary. The close similarity of some of the derived species of the Old and New Worlds is explained by a second trans-Atlantic dispersal event in both Malpighiaceae and *Dalechampia*. It will be interesting to see if additional evidence continues to support these earlier origins and more complex biogeographic scenarios for *Dalechampia*, Malpighiaceae, and possibly other plant groups.

#### LITERATURE CITED

- ACKERY, P. R. 1988. Hostplants and classification: A review of nymphalid butterflies. *Biol. J. Linn. Soc.* 33: 95–203.
- ANDERSON, W. R. 1979. Floral conservatism in neotropical Malpighiaceae. *Biotropica* 11: 219–223.
- ARMBRUSTER, W. S. 1983. *Dalechampia scandens*. Pp. 230–233 in D. H. Janzen (editor), *Costa Rican Natural History*. Univ. Chicago Press, Chicago, Illinois.
- . 1984. The role of resin in angiosperm pollination: Ecological and chemical considerations. *Amer. J. Bot.* 71: 1149–1160.
- . 1988. Multilevel comparative analysis of morphology, function, and evolution of *Dalechampia* blossoms. *Ecology* 69: 1746–1761.
- & W. MZIRAY. 1987. Pollination and herbivore ecology of an African *Dalechampia* (Euphorbiaceae): Comparisons with New World species. *Biotropica* 19: 64–73.
- & K. E. STEINER. 1992. Pollination ecology of four *Dalechampia* species (Euphorbiaceae) in northern Natal, South Africa. *Amer. J. Bot.* 79: 306–313.
- & G. L. WEBSTER. 1979. Pollination of two species of *Dalechampia* (Euphorbiaceae) in Mexico by euglossine bees. *Biotropica* 11: 278–283.
- , A. L. HERZIG & T. P. CLAUSEN. 1992. Pol-



- ination of two sympatric species of *Dalechampia* (Euphorbiaceae) in Suriname by male euglossine bees. *Amer. J. Bot.* 79: 1374-1381.
- , S. KELLER, M. MATSUKI & T. P. CLAUSEN. 1989. Pollination of *Dalechampia magnoliifolia* (Euphorbiaceae) by male euglossine bees (Apidae: Euglossini). *Amer. J. Bot.* 76: 1279-1285.
- , M. E. EDWARDS, J. F. HINES, R. L. A. MAHUNNAH & P. MUNYENYEMBE. 1993. Evolution and pollination of Madagascan and African *Dalechampia*. *Research and Exploration* 9: 430-444.
- CAMMERLOHER, H. 1931. Blüten Biologie I. Gebrüder Borntraeger, Berlin.
- DEVRIES, P. J. 1987. The Butterflies of Costa Rica and Their Natural History. Princeton Univ. Press, Princeton, New Jersey.
- DONOGHUE, M. J. 1989. Phylogenies and the analysis of evolutionary sequences, with examples from seed plants. *Evolution* 43: 1137-1156.
- DRESSLER, R. L. 1982. Biology of the orchid bees (Euglossini). *Annual Rev. Ecol. Syst.* 13: 73-94.
- HUMPHRIES, C. J. & L. R. PARENTI. 1986. Cladistic Biogeography. Clarendon, Oxford.
- MADDISON, W. P. & D. R. MADDISON. 1992. MacClade. Sinauer, Sunderland, Massachusetts.
- , M. J. DONOGHUE & D. R. MADDISON. 1984. Outgroup analysis and parsimony. *Syst. Zool.* 33: 83-103.
- MAGIN, N. 1987. The pseudanthium of *Dalechampia* and its systematic significance. XIV International Botanical Congress, Berlin. [Abstract.]
- MICHAELIS, P. 1924. Blütenmorphologische Untersuchungen an den Euphorbiaceen. *Bot. Abh.* 3: 1-150.
- MICHENER, C. D. 1979. Biogeography of the bees. *Ann. Missouri Bot. Gard.* 66: 277-347.
- OTERO, L. D. 1990. Estudio de algunas caracteres para su uso en la clasificación de Eurytelinae (Lepidoptera: Nymphalidae). *Bol. Entomol. Venez.* 5: 123-138.
- RAVEN, P. H. & D. I. AXELROD. 1974. Angiosperm biogeography and past continental movements. *Ann. Missouri Bot. Gard.* 61: 539-673.
- SANDERSON, M. J. & M. J. DONOGHUE. 1989. Patterns of variation in levels of homoplasy. *Evolution* 43: 1781-1795.
- STEINER, K. E. & V. B. WHITEHEAD. 1991. Resin collection and the pollination of *Dalechampia capensis* (Euphorbiaceae) by *Pachyanthidium* (Megachilidae) in South Africa. *J. Entomol. Soc. South Africa* 54: 67-72.
- SWOFFORD, D. 1993. PAUP. Phylogenetic Analysis Using Parsimony, version 3.0. Illinois Natural History Survey, Champaign, Illinois.
- VOGEL, S. 1990. History of the Malpighiaceae in the light of pollination ecology. *Mem. New York Bot. Gard.* 55: 130-142.
- WEBSTER, G. L. 1975. Conspectus of a new classification of the Euphorbiaceae. *Taxon* 24: 593-601.
- . 1994. Synopsis of the suprageneric taxa of Euphorbiaceae. *Ann. Missouri Bot. Gard.* 81: 33-144.
- & W. S. ARMBRUSTER. 1991. A synopsis of the neotropical species of *Dalechampia* (Euphorbiaceae). *Bot. J. Linn. Soc. London* 105: 137-177.
- & B. D. WEBSTER. 1972. The morphology and relationships of *Dalechampia scandens* (Euphorbiaceae). *Amer. J. Bot.* 59: 573-586.
- WHITTEN, W. M., A. M. YOUNG & N. H. WILLIAMS. 1989. Function of glandular secretions in fragrance collection by male euglossine bees (Apidae: Euglossini). *J. Chem. Ecol.* 15: 1285-1295.
- APPENDIX. List of specimens studied.
- D. aristolochiifolia* HBK: Armbruster et al. 87-128, 87-136 (ALA); Chavez 3067 (MO); Cook & Gilbert 1022 (F); Dillon & Turner 1703 (F, MO); Gentry et al. 44120, Hudson 1192, Hutchison & Wright 3852 (MO); MacBride 3802 (F); Sagastegui et al. 8455, Stein & Todzia 2064 (MO); Stork & Horton 10093, Stork et al. 10563 (F); Vargas 131, Woytkowski 5720, 6564, 6834 (MO). *D. attenuistylus* Armbruster: Armbruster et al. 87-153, Armbruster 93-01 (ALA).
- D. canescens* HBK: Armbruster & Herzig 85-119, 85-127 (ALA); Haught 1832, Plowman & Vaughan 5354 (F); Webster & Armbruster 23651 (ALA). *D. capensis* Spreng.: Armbruster & Steiner 90-202, Armbruster et al. 90-203 (ALA); Bayliss 5294, Coetzee 1328, Dahlstrand 1952, Germishuizen 233, Huntley 79, Kemp 760, Kerfoot K7301, Strey 11185, Zeyher 245 (MO). *D. caperonioides* Baill.: Webster et al. 25245 (ALA). *D. chlorocephala* M. Denis: Armbruster et al. 90-151; Dorr & Koenders 2987, 2987A, 3024 (ALA, MO). *D. clematidifolia* Baill.: Armbruster et al. 90-148 (ALA); Croat 29424, 30130, 31463, 32153 (MO).
- D. dioscoreifolia* Poepp.: Armbruster 79-212, Armbruster et al. 85-117, 87-139 (ALA); Beekman 59, Feuille 417 (CAY); Gentry 6365 (ALA, MO); Gentry et al. 18696 (MO); Granville et al. 7292 (B, CAY, MO, P); Guanche & Huber 4742 (ALA, VEN); Maas et al. 2226 (CAY, U); Oldeman 2067 (CAY, MO, NY, P); Oldeman B.3227 (CAY, NY, U); Poncy 89 (ALA); Proctor et al. 27384 (F); Raynal-Roques 20006 (CAY); Revilla 1710 (MO).
- D. ficifolia* Lam.: Hatschbach 44381 (F); Webster et al. 25007, Webster & Armbruster 25101, 25161 (ALA). *D. fragrans* Armbruster: Armbruster & Herzig 85-101 (ALA, NY); Armbruster & Herzig 85-104 (ALA); Maas et al. 2320 (MO); Mori et al. 8693 (NY, P).
- D. heteromorpha* Pax & Hoffm.: Armbruster 77302, 77306, 77405, 78414, 78422, 79-201, 79-210, 79-217, Armbruster et al. 87-119, 87-134, 87-135 (ALA); Foster 11920 (ALA, F); Webster & Armbruster 22073 (ALA). *D. humilis* Muell. Arg.: Webster et al. 25275 (ALA).
- D. ipomoeifolia* Benth.: Ash 2422, Dalziel 1270, de Wilde 5955, 6872, Grant 4024, Harris 1784, Katende & Lye K440, Westphal & Westphal-Stevens 3497 (MO).
- D. kirkii* Prain: Lavranos 4915, Story 1663 (MO).
- D. liesneri* Huft: Armbruster et al. 87-142, 87-143 (ALA). *D. luetzelburgii* Pax & Hoffm.: Luetzelburg 132 (MO).
- D. "mauesensis"* sp. nov.: Murça Pirez 50 (VEN). *D. megacarpa* Armbruster: Armbruster et al. 85-115, 87-151 (ALA). *D. micrantha* Poepp.: Armbruster et al. 85-113, 87-150, 87-156 (ALA); Byron & Coelho 443 (MO); Garcia-Barriga 14103 (NY); Gentry et al. 29955 (F); Lindeman et al. 214 (U); MacRae & Ruiz 80 (F); Nee 31877 (MO); Poeppig 2807 (P); Poeppig 7200 (MO); Prance et al. 24587 (NY); Revilla 87 (F, MO, NY); Rimachi 323 (NY); Schomburgk 783 (P); Spichiger & Encarnacion 1014 (MO, NY); Spichiger & Encarnacion 1037 (MO); Vasquez et al. 666 (F, MO, NY); Wessels Boer 454 (K, NY, U); Williams 3629 (US).